



Low Vision Collection Borrower's Manual

Low Vision Collection Borrowing Policy and Disclaimer

By checking out this device you are assuming responsibility for any damage, loss or theft of the device while it is checked out to you.

In the event of any damage, loss or theft of an Optelec PowerMag+, OptiVISOR and/or a Vision Aid device you are responsible for the entire replacement cost of the item, and its case.

*The loan period for the Optelec PowerMag+, OptiVISOR and/or Vision Aid device is **21 days**. It may be renewed four times after the original checkout unless it's on hold for another patron. A fine of **\$.20 per day** will be assessed if the Optelec Power Mag+, OptiVISOR and/or Vision Aid device is overdue with a maximum overdue fee of \$20.00.*

The Canton Public Library retains the right to refer unpaid fines to collection agencies, if necessary.

DO NOT RETURN IN BOOK DROP!!! Returning this item in the book drop may cause damage, returning in the book drop will result in a \$10 fine. You must return the Optelec PowerMag+, OptiVISOR and/or Vision Aid device at the Circulation or Help Desk by handing it to a library employee.

Included Parts & Replacement Costs

The Optelec PowerMag+, OptiVISOR and /or Vision Aid device Kit consist of four parts:

- The Optelec PowerMag+ or OptiVISOR or Vision Aid device item (box and packaging)
- 3 AA or AAA rechargeable Batteries (if required)
- Outer carrying case
- Borrower's Manual

The following replacement costs will be charged to your library account if you damage or fail to return any of these parts:

- Lost or damaged Optelec PowerMag+ or OptiVISOR or Vision Aid device: cost of item
- Lost or damaged (3) rechargeable batteries: \$18
- Lost or damaged outer carrying case: \$11
- Lost or damaged Borrower's Manual: \$1

You are not allowed to purchase replacements for these parts or the Optelec or *OptiVISOR* or Vision Aid device yourself.

Other fees:

- Per day late returned: \$0.20
- Returning the Optelec PowerMag+ or *OptiVISOR* or Vision Aid device in the book drop: \$10



The Canton Public Library Low Vision Collection
In Partnership with the Canton Lions Club, Canton, Michigan

The Lions Club of Canton works to provide low vision assistance to those in need. Financial assistance is available to those who qualify. If you are interested in acquiring a magnifier for permanent home use but are unable to afford one, please contact the Canton Lions Club at 734-981-4343 (or email larryw321@yahoo.com) for information on low vision aid assistance.

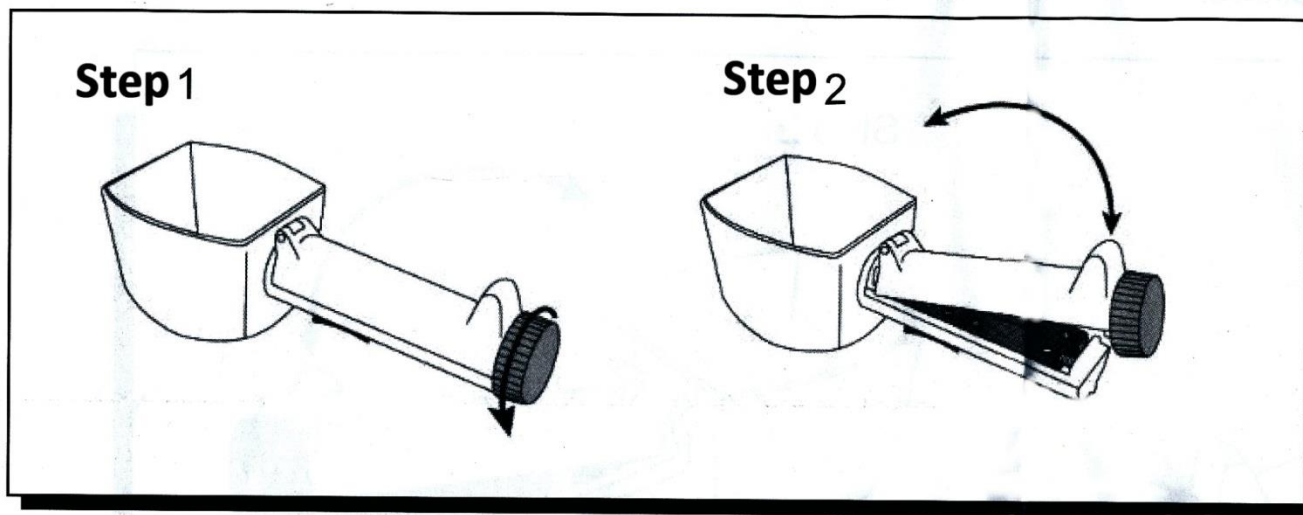
INSTRUCTIONS FOR USE: Optelec PowerMag+

BATTERIES:

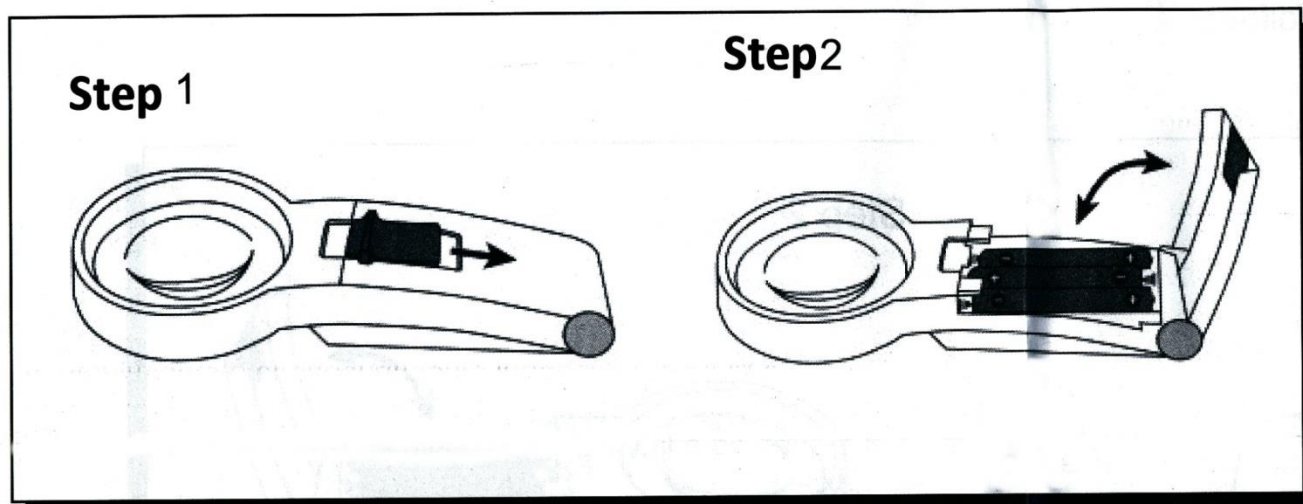
Rechargeable AA or AAA batteries are supplied with the magnifier for your use. You will need to install the batteries before using. Please remember to return the batteries when you return the magnifier.

To install the batteries, open the handle as follows:

Model # 3x/8D – 4x/12D – 5x/16D – 6x/20D – 7x/24D – 8x/28D – 10.75x/39D



Model # 2.5x/6D - 4x/12D – 5x/16D – 10.75x/39D – 6x/20D – 7x/24D – 8x/28D – 3.5x/10D



ON / OFF SWITCH:

Push the blue switch toward the lens to turn on the light.

CLEANING THE LENS:

Use a soft cloth dampened with water to gently wipe the lens. Cleaning solutions of any kind may damage the lens.

WARNING: Do not leave the magnifier in direct sunlight without a cover. Never look at the sun directly through a magnifying lens.

INSTRUCTIONS FOR USE: OptiVISOR (Binocular Magnifier)

OptiVISOR (Binocular Magnifier) Approximate Diopter Power: Lens Plate #3 magnifies 1-3/4 times – focal length 14 inches

HOW TO USE THE *OptiVISOR*:

The *OptiVISOR* should be worn squarely on the head with the center of the lens plate at the bridge of the nose. By adjusting the knob at the rear of the unit enough tension can be applied to hold the headband in place. The adjustable pivots on either side of the visor should be tightened with enough tension to hold the lens in front of the eyes as well as up out of the path of vision when not in use.

CARE OF THE *OptiVISOR*:

The *OptiVISOR* lenses are glass and much more scratch resistant than plastic lenses. To avoid scratching polished lens surface wash in warm soapy water or lens cleaner and dry with a clean soft cloth. **Never use abrasive cleaners**

CAUTION:

OptiVISOR is not a safety device and should be worn over safety glasses when safety is a concern. The *OptiVISOR* is designed to be worn over prescription eyeglasses and not to replace them.

INSTRUCTIONS FOR USE: Fresnel Full Sheet Magnifier

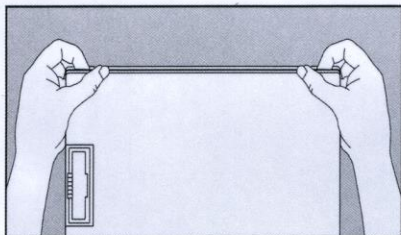
CLEANING THE LENS:

Use a soft cloth dampened with water to gently wipe the lens. Cleaning solutions of any kind may damage the lens.

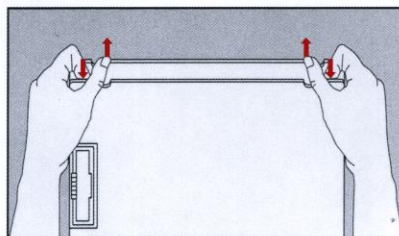
WARNING: Do not leave the magnifier in direct sunlight without a cover. Never look at the sun directly through a magnifying lens

INSTRUCTIONS FOR USE: "Easy Reader" reading stand

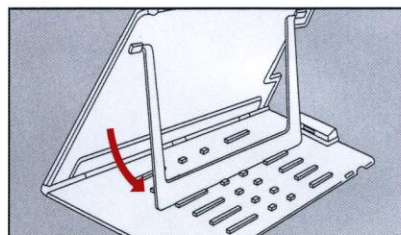
OPENING AND SET UP:



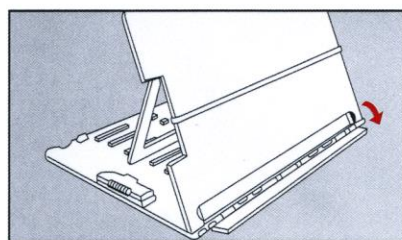
1. Position Easy Reader® with metal clip on your left and facing you. Place forefingers in slots and thumbs on tabs.



2. Press thumbs up and away from you and forefingers towards you to open.



3. Lift inside support to one of six positions for desired reading angle. Adjust to avoid glare and shadows. Snap into place.



4. Open shelf to hold books or papers. Lift page-holder over books that need help to stay open.